

- GENERAL NOTES**
1. WALKWAY ACCESSES ALONG KING ST W TO BE EXTENDED THROUGH RETAINING WALL.
 2. ENTRANCE ACCESSES ALONG KING ST W TO BE DESIGNED AS PART OF KING ST W GRADE SEPARATION.
 3. UTILITY CONFLICTS TO BE ASSESSED BY PROJECT CO.
 4. ADDITIONAL PROPERTY REQUIRED FOR PLACEMENT OF RETAINING WALLS. PARTS REQUIRED FROM:
 - 598, 607, 618, 619, 621, 624 KING ST W
 - 2 MOORE AVE
 - 51 BREITHAUPT ST



DISCLAIMER:
 THE POSITION OF POLE LINES, CONDUITS, WATERMANS, SEWERS, AND OTHER UNDERGROUND AND ABOVE GROUND UTILITIES AND STRUCTURES IS NOT NECESSARILY SHOWN ON THE CONTRACT DRAWINGS, AND WHERE SHOWN, THE ACCURACY OF THE POSITION IS NOT GUARANTEED. BEFORE STARTING WORK, THE CONTRACTOR SHALL DETERMINE THE EXACT LOCATION OF ALL SUCH UTILITIES AND STRUCTURES AND SHALL ASSUME ALL LIABILITY FOR DAMAGE TO THEM.



STAMP:



CONTROLLING B.M.

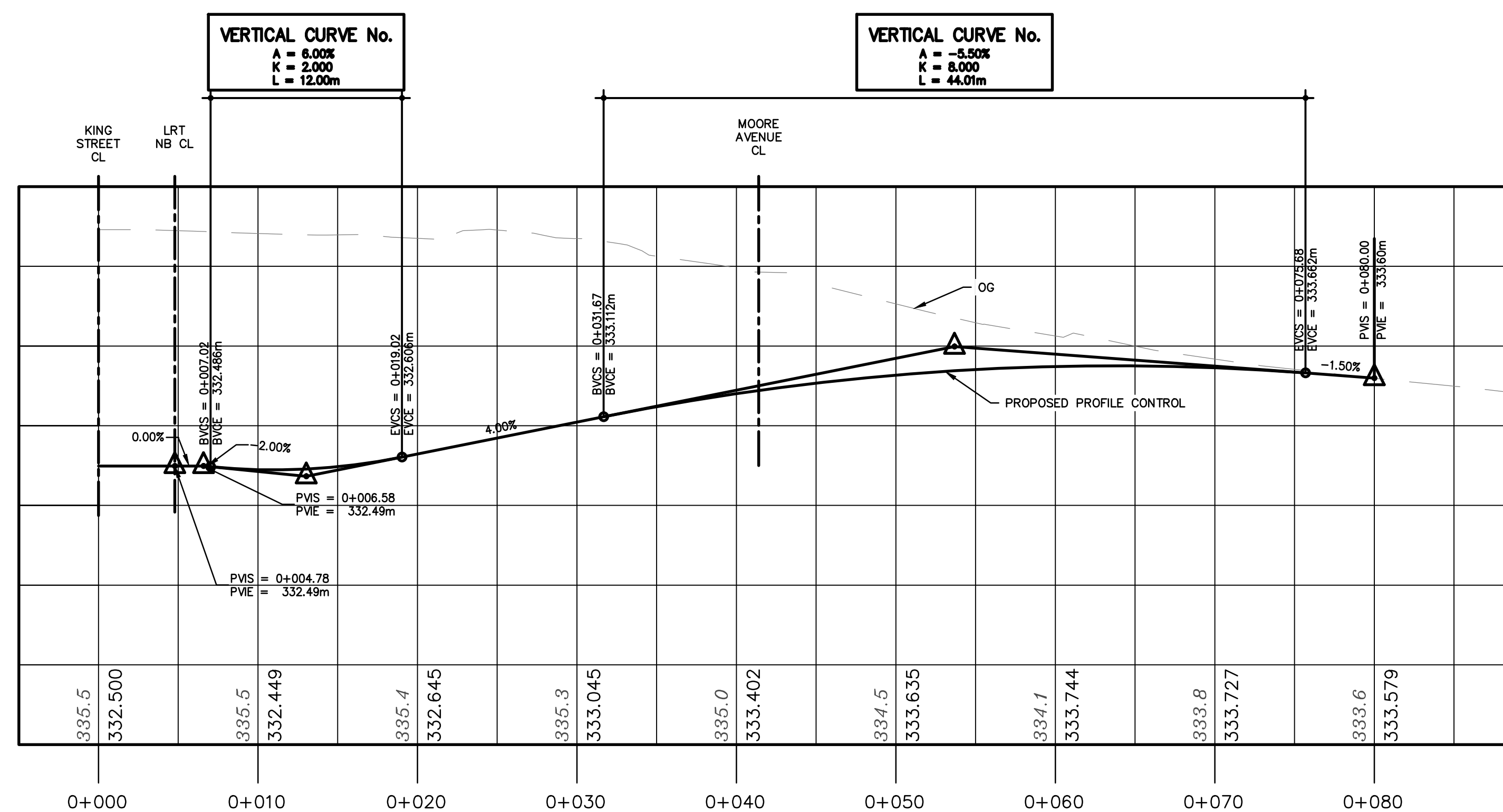
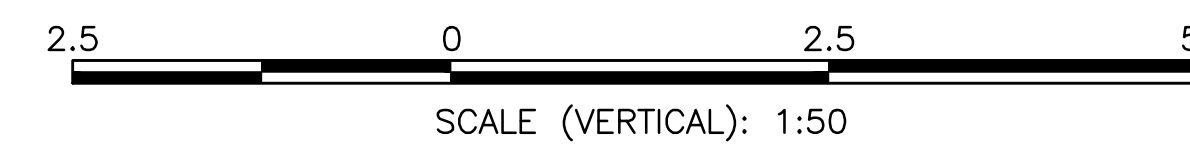
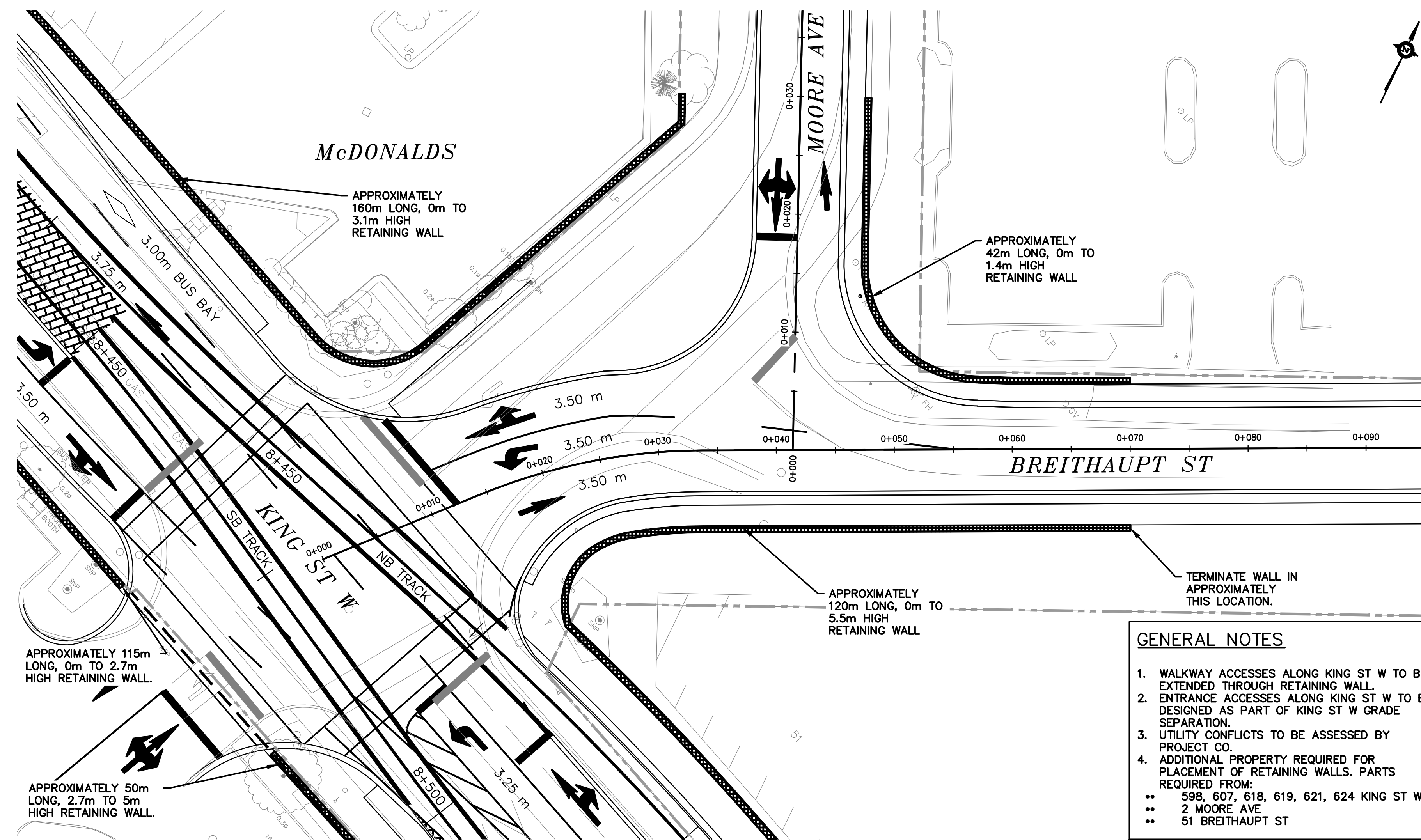
FIELD BOOK No.

0	ISSUED FOR VERSION 3.0	GEC	NOV 01 2013
No.	ISSUE/REVISION	BY	DATE

REGION OF WATERLOO
 STAGE I
 LRT PROJECT

KEYPLAN

DRAWN BY: JA	PROJECT No.
DESIGNED BY: MG	CHECKED BY: EM
DATE: NOVEMBER 01, 2013	DRAWING No. C-PP-600
SCALE: AS SHOWN	SHEET 1 OF 4
CAD FILE: C-PP-601_602_2013-11-01.DWG	



DISCLAIMER:
THE POSITION OF POLE LINES, CONDUITS, WATERMANS, SEWERS, AND OTHER UNDERGROUND AND ABOVE GROUND UTILITIES AND STRUCTURES IS NOT NECESSARILY SHOWN ON THE CONTRACT DRAWINGS, AND WHERE SHOWN, THE ACCURACY OF THE POSITION IS NOT GUARANTEED. BEFORE STARTING WORK, THE CONTRACTOR SHALL DETERMINE THE EXACT LOCATION OF ALL SUCH UTILITIES AND STRUCTURES AND SHALL ASSUME ALL LIABILITY FOR DAMAGE TO THEM.



STAMP:



CONTROLLING B.M.

FIELD BOOK No.

0	ISSUED FOR VERSION 3.0	GEC	NOV 01 2013
No.	ISSUE/REVISION	BY	DATE

REGION OF WATERLOO
STAGE I
LRT PROJECT

CIVIL PLAN AND PROFILE
BREITHAUPT STREET

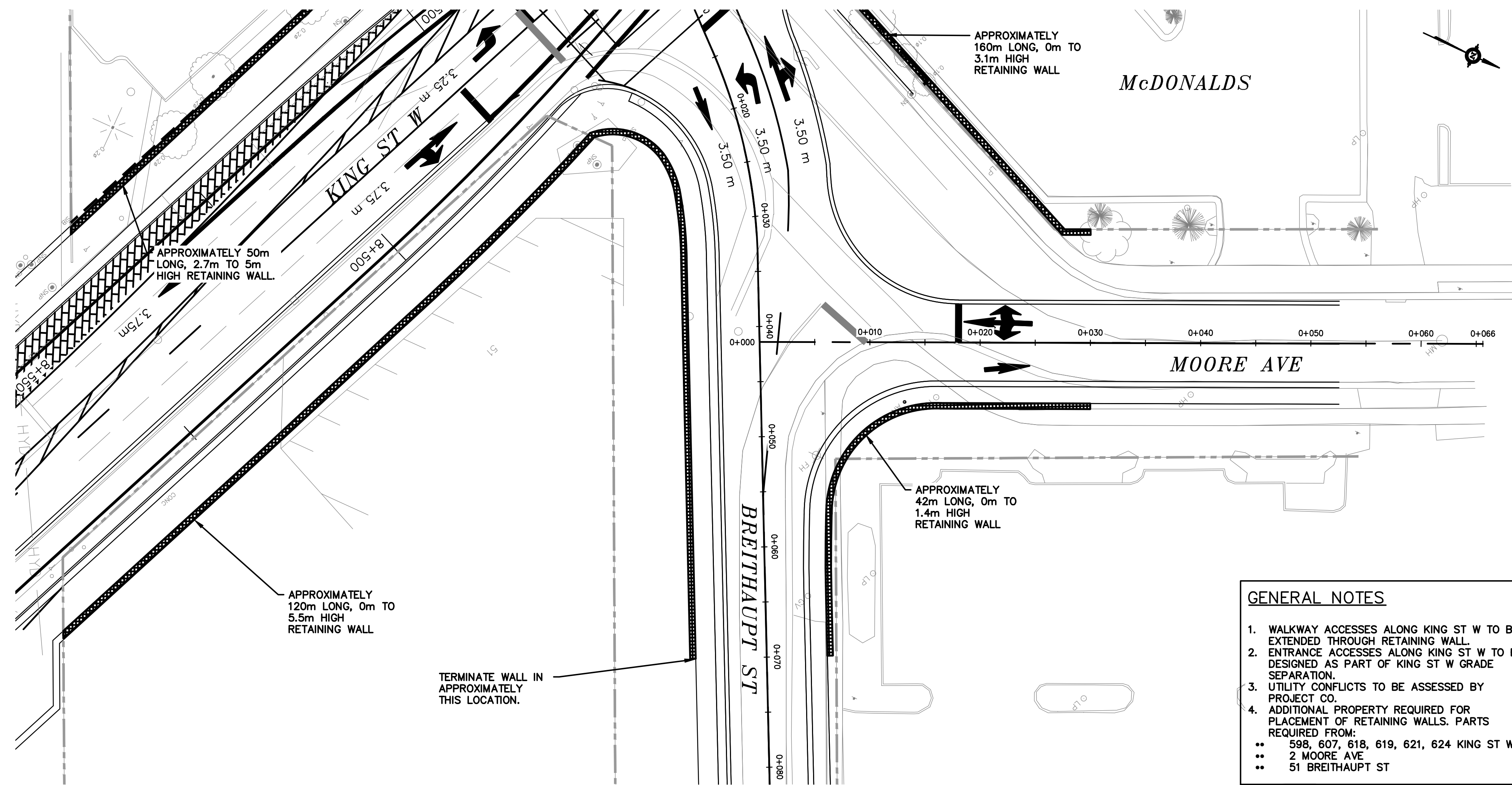
DRAWN BY: JA PROJECT No.

DESIGNED BY: MG CHECKED BY: EM

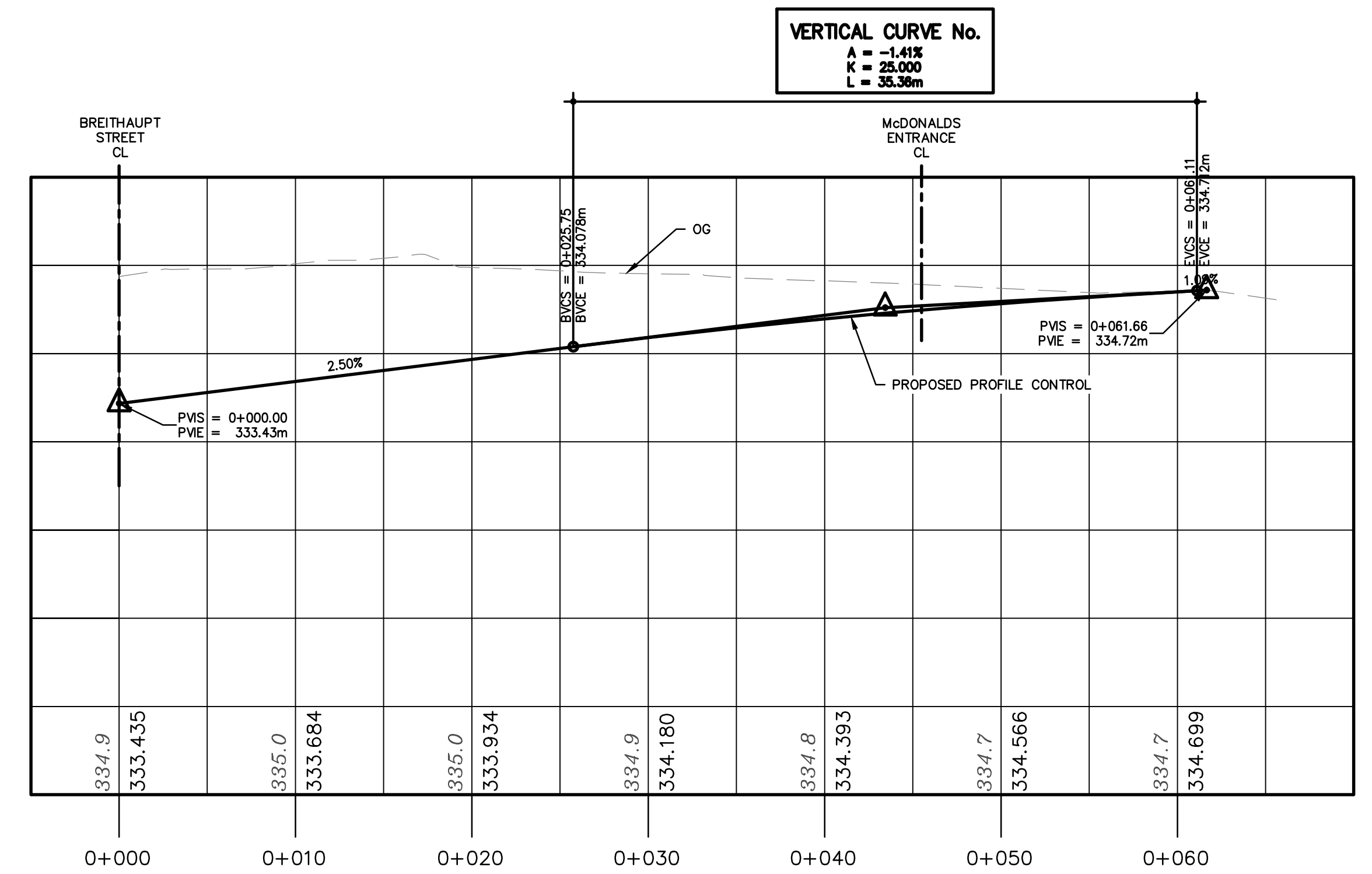
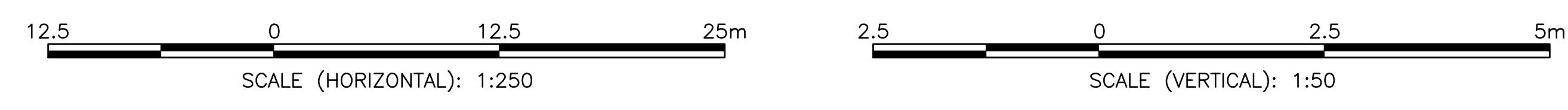
DATE: NOVEMBER 01, 2013 DRAWING No. C-PP-601

SCALE: AS SHOWN SHEET 2 OF 4

CAD FILE: C-PP-601_602_2013-11-01.DWG



- GENERAL NOTES**
1. WALKWAY ACCESSES ALONG KING ST W TO BE EXTENDED THROUGH RETAINING WALL.
 2. ENTRANCE ACCESSES ALONG KING ST W TO BE DESIGNED AS PART OF KING ST W GRADE SEPARATION.
 3. UTILITY CONFLICTS TO BE ASSESSED BY PROJECT CO.
 4. ADDITIONAL PROPERTY REQUIRED FOR PLACEMENT OF RETAINING WALLS. PARTS REQUIRED FROM:
 - 598, 607, 618, 619, 621, 624 KING ST W
 - 2 MOORE AVE
 - 51 BREITHAUPT ST



DISCLAIMER:
 THE POSITION OF POLE LINES, CONDUITS, WATERMANS, SEWERS, AND OTHER UNDERGROUND AND ABOVE GROUND UTILITIES AND STRUCTURES IS NOT NECESSARILY SHOWN ON THE CONTRACT DRAWINGS, AND WHERE SHOWN, THE ACCURACY OF THE POSITION IS NOT GUARANTEED. BEFORE STARTING WORK, THE CONTRACTOR SHALL DETERMINE THE EXACT LOCATION OF ALL SUCH UTILITIES AND STRUCTURES AND SHALL ASSUME ALL LIABILITY FOR DAMAGE TO THEM.



STAMP:



CONTROLLING B.M.

FIELD BOOK No.

0	ISSUED FOR VERSION 3.0	GEC	NOV 01 2013
No.	ISSUE/REVISION	BY	DATE

REGION OF WATERLOO
 STAGE I
 LRT PROJECT

CIVIL PLAN AND PROFILE
 MOORE AVE

DRAWN BY: JA PROJECT No.

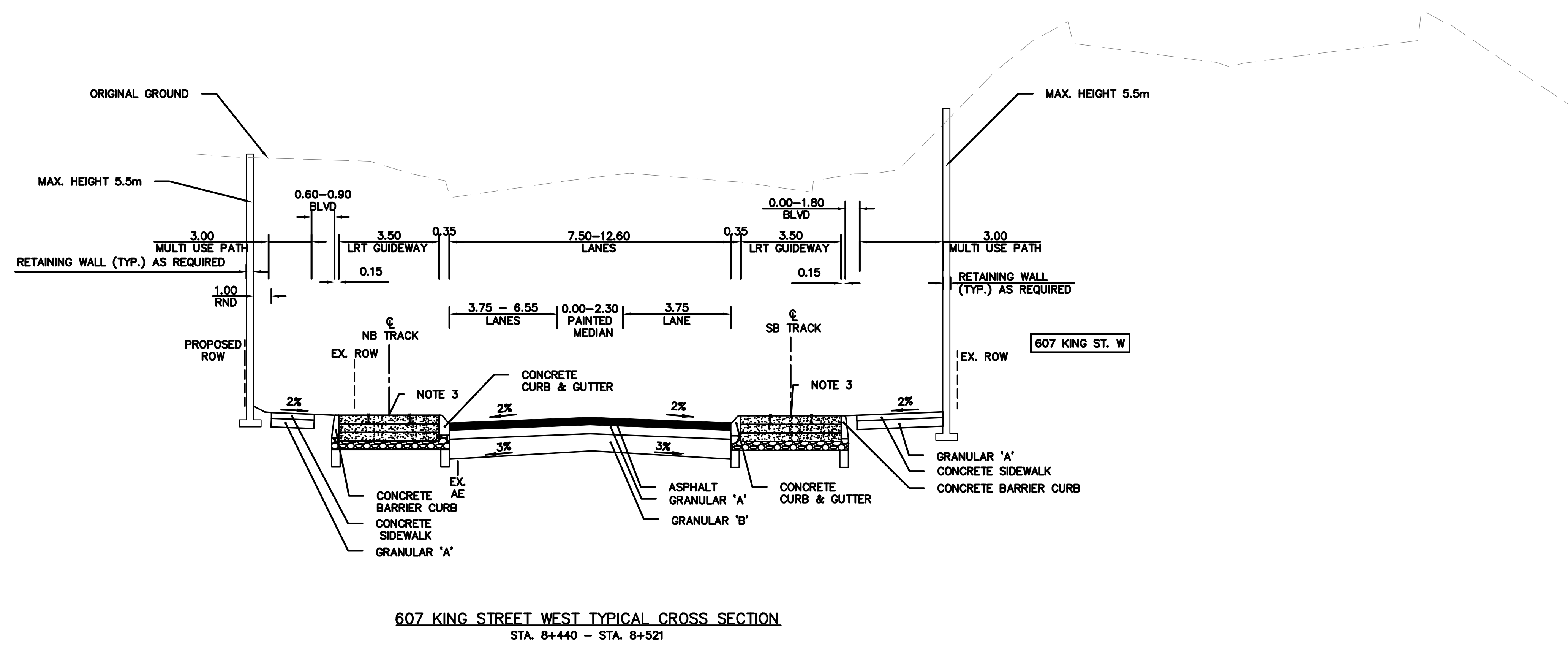
DESIGNED BY: MG CHECKED BY: EM

DATE: NOVEMBER 01, 2013 DRAWING No. C-PP-602

SCALE: AS SHOWN SHEET 3 OF 4

CAD FILE: C-PP-601_602_2013-11-01.DWG

DISCLAIMER:
 THE POSITION OF POLE LINES, CONDUITS, WATERMANS, SEWERS, AND OTHER UNDERGROUND AND ABOVE GROUND UTILITIES AND STRUCTURES IS NOT NECESSARILY SHOWN ON THE CONTRACT DRAWINGS, AND WHERE SHOWN, THE ACCURACY OF THE POSITION IS NOT GUARANTEED. BEFORE STARTING WORK, THE CONTRACTOR SHALL DETERMINE THE EXACT LOCATION OF ALL SUCH UTILITIES AND STRUCTURES AND SHALL ASSUME ALL LIABILITY FOR DAMAGE TO THEM.



607 KING STREET WEST TYPICAL CROSS SECTION
 STA. 8+440 - STA. 8+521

GENERAL NOTES

- ON CURVES OFFSET BETWEEN TRACKS VARIES ACCORDING TO DESIGN SPEED AND RADIUS.
- SECTIONS ARE TAKEN ALONG THE CENTERLINE OF NORTHBOUND TRACK, UNLESS OTHERWISE STATED.
- DRAINAGE DETAILS SHOWN ARE FOR CONCEPTUAL PURPOSES ONLY. PROJECT CO TO PROVIDE DETAILS TO ENSURE POSITIVE DRAINAGE TO EXISTING OUTLETS, IN SOME CASES LINEAR DRAINS MAY BE REQUIRED. SECTIONS HAVE BEEN DRAWN WITH A 2:1 VERTICAL EXAGGERATION.
- SECTIONS WITH STATION PLATFORM LOCATIONS ARE TO BE CONSTRUCTED WITH EMBEDDED TRACK OR EQUIVALENT.
- LRT GUIDEWAY WIDENS WITHIN STATION PLATFORM LOCATIONS.
- GRANULAR DEPTH SHOWN ARE CONCEPTUAL PROJECT CO TO VERIFY PROJECT DEPTHS WITH GEOTECH INVESTIGATION.
- ALL SIDESLOPES TO BE CONSTRUCTED AT 2:1 MAXIMUM.
- COLOURED CONCRETE AND REQUIRED GRANULAR TO BE INSTALLED BEHIND CURB TO A MAXIMUM WIDTH OF 0.9m WHERE BLVD SPACE IS PROVIDED.
- WHERE SINGLE LANE WIDTH IS 4.80m A 1.30m A 1.30m PAINTED SHLD IS TO BE PROVIDED. WHERE LANE WIDTH IS 4.60m A 1.25m PAINTED SHLD IS TO BE PROVIDED.



STAMP:



CONTROLLING B.M.

FIELD BOOK No.

0	ISSUED FOR VERSION 3.0	GEC	NOV 01 2013
No.	ISSUE/REVISION	BY	DATE

**REGION OF WATERLOO
 STAGE I
 LRT PROJECT**

**607 KING ST W
 CROSS SECTION**

DRAWN BY: JA	PROJECT No.
DESIGNED BY: MG	CHECKED BY: EM
DATE: NOVEMBER 01, 2013	DRAWING No. C-PP-603
SCALE: AS SHOWN	SHEET 4 OF 4

CAD FILE:
 C-PP-601_602_2013-11-01.DWG